

# Mercer's Wood Academy



## Physical Education and Sports Premium Statement

---

**PE & School Sports funding:**

**Number on roll:**

### **Context**

Being in an area of extremely low deprivation, health (in all its facets) must be a high priority for our school. It is historically not valued enough in the community. Speaking in general terms, pupils do not have established, consistent sleep routines or eat appropriately healthy diets. A lack of opportunities for physical activity is also a problem so it is our job to promote the value of sleep, healthy eating & physical activity. We believe that improving these aspects of a pupil's life will also develop their mental fortitude and overall wellbeing. This sits perfectly with our school vision:

### **Vision**

To become the best versions of ourselves.

## Themes of Achievement:

In line with the Youth Sport Trust guidance and recommendations from the NHS (pupils should perform at least 60 minutes of physical activity each day), Mercer's Wood Academy has identified the following as Themes of PE and Sporting achievement for pupils entitled to Physical Education and School Sports Premium funding:

**Healthy Active Lifestyles** – Ensuring the school is as active as possible.

- Provide structured physical activities in the playground.
- Offer daily physical activities within the classroom.
- Encourage pupils to walk, cycle or scoot to school.
- Encourage parents to be active with their children.
- Promote pupil & staff well-being and fitness.

**Using PE as a tool for whole school improvement** – Ensuring PE impacts the curriculum.

- Enhance positive behaviour and a sense of fair play.
- Improve concentration, commitment and self-esteem.
- Reduce incidences of bullying and poor behaviour at breaks and lunch times.
- Improve attendance and relationships with parents and carers.
- Improve staff confidence and morale.

**Professional Learning and your PE team** – Ensuring appropriate subject leadership and staff training.

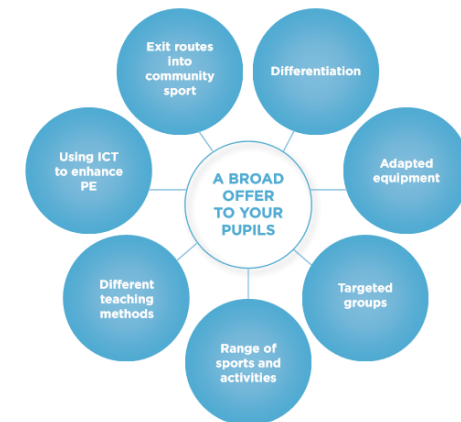
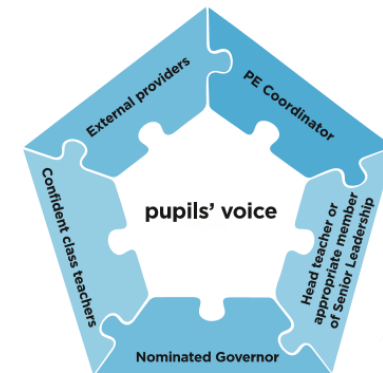
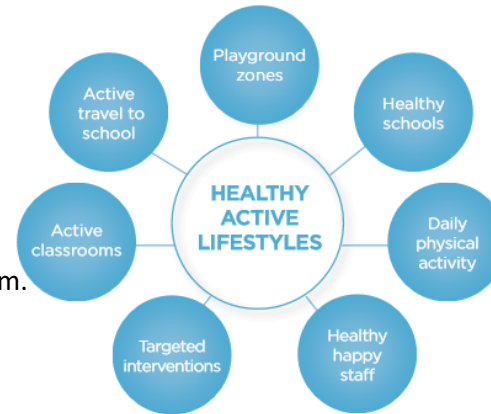
- Improve quality of teaching and learning of PE.
- Improve confidence of staff in a range of sports.
- Improve motivation and engagement in PE lessons.
- Provide opportunities for pupils to take lead roles during lessons.

**A broad offer to all pupils** – Ensuring all pupils are offered a range of appropriately challenging and inclusive experiences.

- Promote pupil voice in making decisions on extra-curriculum opportunities.
- Offer links to outside sports clubs and organisations.
- Target groups of pupils who are less active; working with them to address their participation.
- Provide a range of sports and activities too all pupils both in and out of the curriculum.
- Provide stretch and challenge for higher ability pupils.

**Competition for all** – Ensuring that pupils are offered opportunities to compete.

- Provide opportunities to take part in a range of competitions.
- Take part in National School Sports Week, provided by the Youth Sports Trust.
- Provide opportunities for talented pupils to compete on local, regional and national levels.



**Planned expenditure (Future implementation)**

**A. Quality of teaching for all**

Intent	Implementation	Evidence & rationale	How will we ensure it is implemented?	Staff lead	How will we review?	Cost	Review (July 2023)
<p>Improve the quality of PE &amp; sport provision</p>	<p>Monitoring &amp; training of teachers for PE.</p> <p>New PE curriculum (scheme) implemented.</p> <p>Use of Gainsborough Trinity facilities to deliver PE lessons so children have ample space.</p> <p>Gainsborough Trinity employed to model the teaching of quality PE lessons. Sports coach to also hold two after school clubs per week and 2 lunchtime clubs.</p> <p>Commando Joe to be delivered termly by staff. School values embedded as a second PE session per week.</p>	<p>The PE curriculum was dated and had narrowed over time. We want to expose children to a wider range of sports and physical activities as well as improving the quality of T&amp;L in PE.</p> <p>With the curriculum widening and more sports being taught it is important that all teachers have the access to PE resources when they need them. Through the use of a new curriculum, resources generated from the PE lead and access to a PE scheme, teachers will have an increased confidence throughout the year.</p> <p>There are many different sports that we want our pupils to have the opportunity to experience. By including extra after school clubs, the pupils will be able to experience some extra sports that they would otherwise not have the opportunity to do so.</p> <p>Lunchtimes can be a very tricky time in terms of behaviour. The children need structure, routines and a good role model. Gainsborough Trinity will provide this during lunchtimes, twice a week as well as training the MSA's to competently set and deliver activities during lunchtimes.</p> <p>The facilities at MWA are small and do not provide children with enough outside space to participate safely and to achieve full potential.</p> <p>School values are embedded through assemblies and within the classroom but not in a practical way. This provision can develop the essential life and character skills</p>	<p>Monitoring of T&amp;L in PE (pupil interviews, learning walks)</p> <p>Staff training &amp; support from PE lead (staff meetings, schemes of work provided)</p> <p>Gainsborough Trinity to deliver MSA training Sept 2022.</p> <p>Timetables and staffing to be completed by PE lead to ensure clear structure and timings.</p>	<p>PE Lead, HOS, GTF</p>	<p>Subject Leader sessions</p> <p>Monitoring analysis (e.g following chatter groups)</p> <p>Learning walk feedback sessions</p>	<p>£10,000 (Gainsborough Trinity)</p> <p>£500 (PE scheme)</p> <p>Commando Joe</p> <p>£2000</p>	<p>Really good use of facilities. Sports Day was a great success again. The coaches have been great by providing guidance and support throughout the year.</p> <p>The scheme of work is always updated regularly to suit the National Curriculum.</p> <p>Achieved Gold Schools games mark. Children are competing more.</p>

		needed. The children need a chance to achieve, be resilient, tolerate others and make good choices for life inside and outside of school.					
Children are more physically active	Increased number and variety of after school clubs  Structured playground activities for KS1 and 2 children at break and lunch times.	The health (physical, mental & emotional) of our children is an area of concern. Aspirations have historically been low and poor diet, lack of sleep & low self-esteem are common barriers to learning.  Through increased emphasis on daily exercise, the children will develop a keen respect for health. This will allow the children to feel better and place more important on their well-being which includes diet and sleep.  Through the increased variety of clubs, we plan for the children to develop interest in a wider selection of sports that are available to them. This will create more opportunity for a development in a sport of their interest, which will in turn generate a higher level of aspiration.	Monitoring levels of physical activity of children (surveys, chatter groups, after school club analysis)	PE Lead, HOS, GTF	Termly Chatter groups analysis, pupil interviews, parent surveys	£150  Plus GTF package	, 2 x lunchtime sports clubs arranged by Gainsborough Trinity.  2 x sports clubs afterschool.  Wheelchair sports week.  More sports clubs for after school next year.
Increased opportunities in competitive sports for all	Youth Sports Trust membership Gainsborough School Sport cluster membership School Games membership Intra-Trust competitions	Engagement in competitive sports has been limited to a relatively small number of pupils. We must broaden the offer to incorporate different sports to engage a wider range of children.	Monitoring participation in sports competitions (netball, football, swimming, cross country, rugby, volleyball, athletics, cricket, dance)	PE Lead,	Continually monitor number of participants in school sport competitions. Analyse results to see trend over time	£580 (includes staffing & transport costs for events)	Great success this year in competing in a range of sport.  Football, Netball, Rounders, Orienteering and hockey.  More activities will be arranged next year within the trust but also at Gainsborough Trinity with activities and tournaments at least once a term .

Improved mentality towards healthy, active lifestyles.	<p>Healthy snack days (including marketing &amp; prizes) Use of Gainsborough Trinity season tickets as reward.</p> <p>External fitness support that includes the participation of adults.</p>	<p>Poor diets are common amongst our pupils. By promoting healthy eating and the inclusion of Health Snack days, we hope that improved diet will become a focus value for each of our pupils. Establishing Health mentors and also engaging with parents forms a good partnership. It will build family relationships and quality time together.</p> <p>Pupils will be more eager to engage with our culture of a Healthy Active Lifestyle if they see the value of it. We hope that by including parents within this we can encourage children to be part of this vision outside of school too.</p>	<p>Termly Healthy Snack Day competition. Monitor in-school food (including lunches)</p> <p>Parent /child / teacher fitness sessions (GTF)</p>	HMs, PE Leads, GTF	Termly Health Mentors meetings, termly Chatter group analysis	£0 Plus GTF package	<p>Lunches have been monitored – different options provided for the children. Some children are now opting for fruit and yoghurt instead of a pudding.</p> <p>Health Monitors and Healthy Snack days to be included next year. Add to Pupil Development dates.</p>
Improved emotional resilience	BR & LP support. HMs involvement	<p>There are some particular pupils within school that can struggle to manage emotions (especially within competitive sports situations). This is an opportunity to create interventions for these particular children which will help them develop their ability to manage emotions and start to use leadership skills when required.</p> <p>Part of our vision is to create children with a confident mind-set towards health and fitness. This will need to include a strong sense of morality and a positive approach to their wellbeing. By developing our Health Mentors, this can be something that is driven throughout school</p>	Chatter groups, Deep Dives, staff & pupil interviews	LP, BR, HMs	Chatter group analysis, Deep Dive opportunities	£0	Coach Jackson completed a series of sessions for GD pupils in Year 3-5. These sessions were to develop competitiveness but also win and losing strategies. The children were also shown how to set up games and lead these during playtimes.
Improve the quality of PE provision and broaden our curriculum.	Resources (Tennis sets, tri golf, hockey sticks and balls, volleyball, dodgeballs, yoga mats, swimming kit, staff uniform)	Over time, a lot of our sports equipment has become worn down. Some restrictions that were on our current curriculum were based on the limited amount of sports equipment available.	Chatter groups, learning walks, curriculum	PE lead . HOS	Termly chatter groups, curriculum meetings with other PE leads in the trust.	£1,746.99	Equipment has been bought and replenished. It is hoped to purchase further more equipment next academic year to ensure full coverage of resources for all sports within the curriculum.
Improve the quality of teaching within PE	<p>Subject leader release time</p> <ul style="list-style-type: none"> <li>- Monitoring</li> <li>- Deep Dives</li> <li>- CPD</li> <li>- Staff training</li> </ul>	Teachers are not always confident in teaching PE. In the past, the opportunity for CPD and curriculum analysis has been limited. The curriculum has not always shown clear progression. PE scheme will support high quality planning for teachers.	<p>Chatter groups, learning walks.</p> <p>Monitoring of teaching and learning in PE</p>	PE lead, HOS	Subject Leader sessions Monitoring analysis (e.g following chatter groups)	£0 Part of GTF package.	During deep dives, all teachers were delivering lessons to a high standard. The lessons included good differentiation, modelling and use of vocabulary.

	- Curriculum planning - PE scheme		Staff training & support from PE lead & PSA		During Learning walk feedback sessions		
Create enrichment within our PE provision. Give real life experiences to the children in order to boost aspiration.	Educational visits, visitors to school, support sessions, elite level competition visits <ul style="list-style-type: none"> <li>Booked Street Dance .</li> <li>Wheelchair Paralympic sports (1 week)</li> </ul>	Historically the pupils within the local area have lacked aspiration as well as real life experiences. Through the introduction of fresh, real life experiences, the children will develop their cultural capital.	Feedback with HOS.  Discussions and analysis with other Sports leads.	PE, HOS	Termly chatter groups, parent surveys and pupil interviews.	£1388	A week of wheelchair sports was fantastic. The coach was really informative and was good delivery of a range of different sports. The children were fully engaged and loved the sessions.
						<b>Total spend:</b>	£16,364.99

**How the school will measure the impact of the Physical Education and School Sports Premium:**

We will combine quantitative & qualitative methods, including lesson observations, monitoring attainment & progress of pupils & pupil questionnaires. We will also assess every pupil in the key strands in PE (as identified by our PE Subject Leaders) termly. At Mercer’s Wood Academy, we will swiftly identify the need for support and intervention. A review of this document will take place in accordance with the timetable within the Strategy.

**New PE & Sport Premium statement to be written & published:** 30<sup>th</sup> September 2023

**Date of next Physical Education and School Sports Premium Strategy Reviews:** July 2023